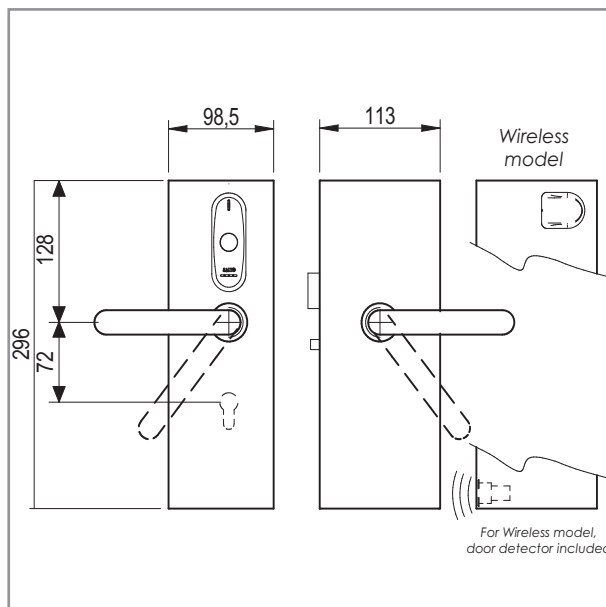


E96xGD

Networked Electronic lock

For Glass Door Din 18101

Contactless MIFARE



The XS4 E96mGD Glass Door Lock versions are specially designed to fit DIN 18101 glass door. This stand alone electronic glass door lock can work as a simple self programmable system that needs no computer to manage it, through a highly capable mid-range ROM system up to the high performance data on card technology SALTO Virtual Network (SVN) system that allows you to control all the doors in an entire building or group of buildings from a single PC.

Furthermore, the Mifare RFID contactless technology reads & writes information to contactless smart cards (RFID) compatible with ISO 14.443A, ISO 14.443B and ISO 15.693 (VICINITY) standards, and as MIFARE, DESfire technologies. They also allow for updating of the carriers via SALTO Virtual Net (SVN) technology.

These SALTO electronic glass door locks are compatible with NFC (Near Field Communication) technology which allows NFC enabled cell phones to act as contactless data carriers to open and control SALTO access controlled doors.

They offer a wide range of options when used in multiple applications with other systems using the same card. With simple, intuitive use and ID carriers available in many formats, this system is ideally suited for special needs applications.

Access Control Features

	Selfprogrammable system	ROM systems	R&W systems
Maximum number of users per door:	1000	680	64000
Maximum number of doors per system:	1000	16000	64000
Maximum events on lock audit:	-	1000	1000
Timezones:	-	30	256
Timeperiods:	-	20	256
Calendars in system:	-	4	256
Zones in system:	-	unlimited	unlimited
User groups:	-	unlimited	unlimited
Management:	Programming key and users key sets	Pro Access ROM software	Pro Access or HAMS software (available SQL versions)

Mechanical Features

- Dimensions: 296mm x 98.5mm x 20mm.
- Weight: 1.5 kg.
- Handle rotation: 52°
- Glass door compatibility: Din 18101 standard.
- Distance from the handle to the cylinder: 72 mm.
- Handle clutch mechanism.
- Automatic lock, the auxiliary latch (anticard) projects and deadlocks the deadbolt.
- The handle retracts the latch and the deadbolt to normal position
- Inside always allows free egress (anti panic in combination with lock).
- Mechanical override with audit trail facility available.
- Body and escutcheon made of steel.
- Handle fixed by Steady Fix system (patented).
- Handles compatibility: 16mm Ø, 18mm Ø.
- High security through advanced hardened high resistance anti-drill plates to protect wires and reader area and additional extreme protection through hardened plates and floating steel balls in the handle area.

Cylinders compatibility:
European cylinders

Squared spindles:
8mm

Door thickness:
8 - 14 mm

Electronic features

- Wire free stand alone networked system though SVN technology*.
- Wireless real-time on-line networked system though SALTO Wireless technology*.
- Locks are connected to the system through the SVN or the wireless technology improving the security and efficiency of the system*.
- Non volatile memory (is not deleted, even without power).
- Escutcheons are equipped with a low consumption real time clock function, which allows time zones access planning and the use of 4 different calendars in ROM systems or 256 in R&W systems.
- Dual colour LED (green/red) to indicate lock authorisation.
- Possibility to enable/disable the acoustic signal.
- Power supply: 3 alkaline batteries LR03 AAA 1,5V.
- Battery autonomy up to 50 000 openings.

ID technology

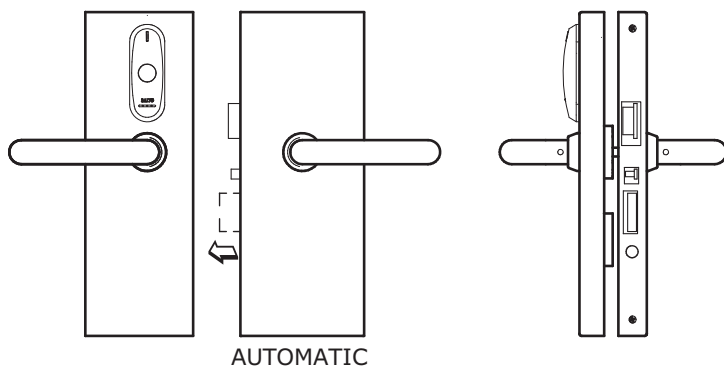
- 13.56MHz contactless RFID identification.
- ISO 14.443A, ISO 14.443B and ISO 15.693 (Vicinity), Mifare, DESfire Compatible.
- Near Field Communication (NFC) compatible.
- Key card available: 1Kbyte (Mifare) and 4Kbytes (Mifare).
- Key shape available: ISO 7810 Cards, fobs, bracelets, stickers, watches...
- Reusable key cards.
- SALTO Virtual Network (SVN) compatible*.
- RFID technology, there's a contactless exchange of information between the card and the reader*.
- High security, by using password and encrypted Proximity cards.
- Multiapplication with other systems using the same card through shared sectors.
- Customized issuing card through the SALTO Authorization Media software (SAM).
- Waterproof cards which can be customized.



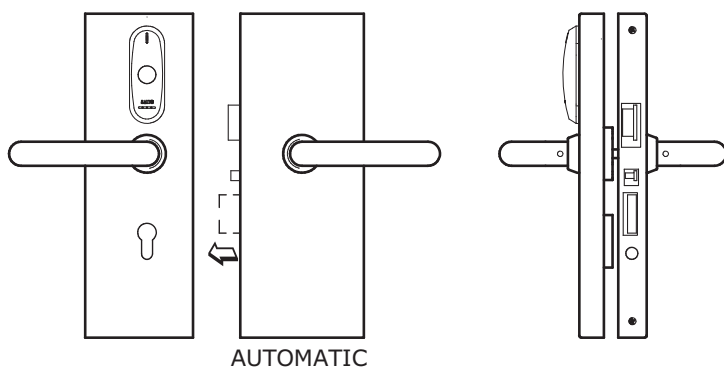
* depending on the model and technology.

Model range*

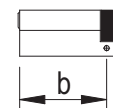
E9650 m GD IM t hh



E9654 m GD IM t hh

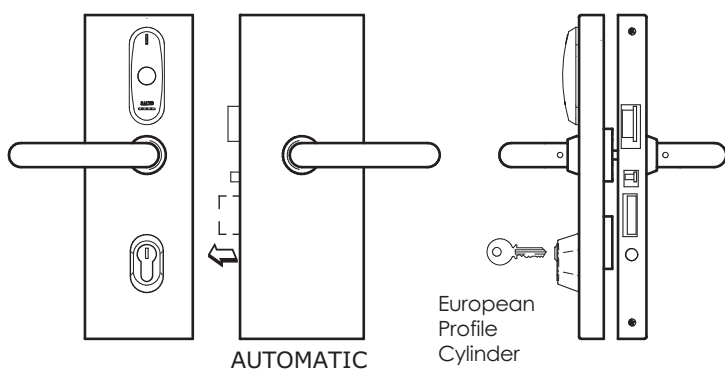


Door Thickness	b Measure
8mm	45
10mm	50
12mm	50



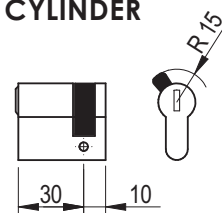
EMERGENCY CYLINDER

E96P0 m GD IM t hh



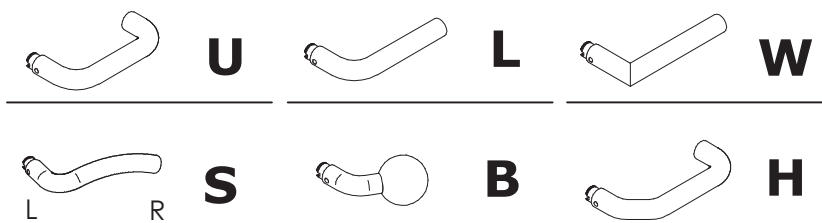
European Profile Cylinder

STANDARD EUROPEAN PROFILE CYLINDER



KEY OVERRIDE

Handels*

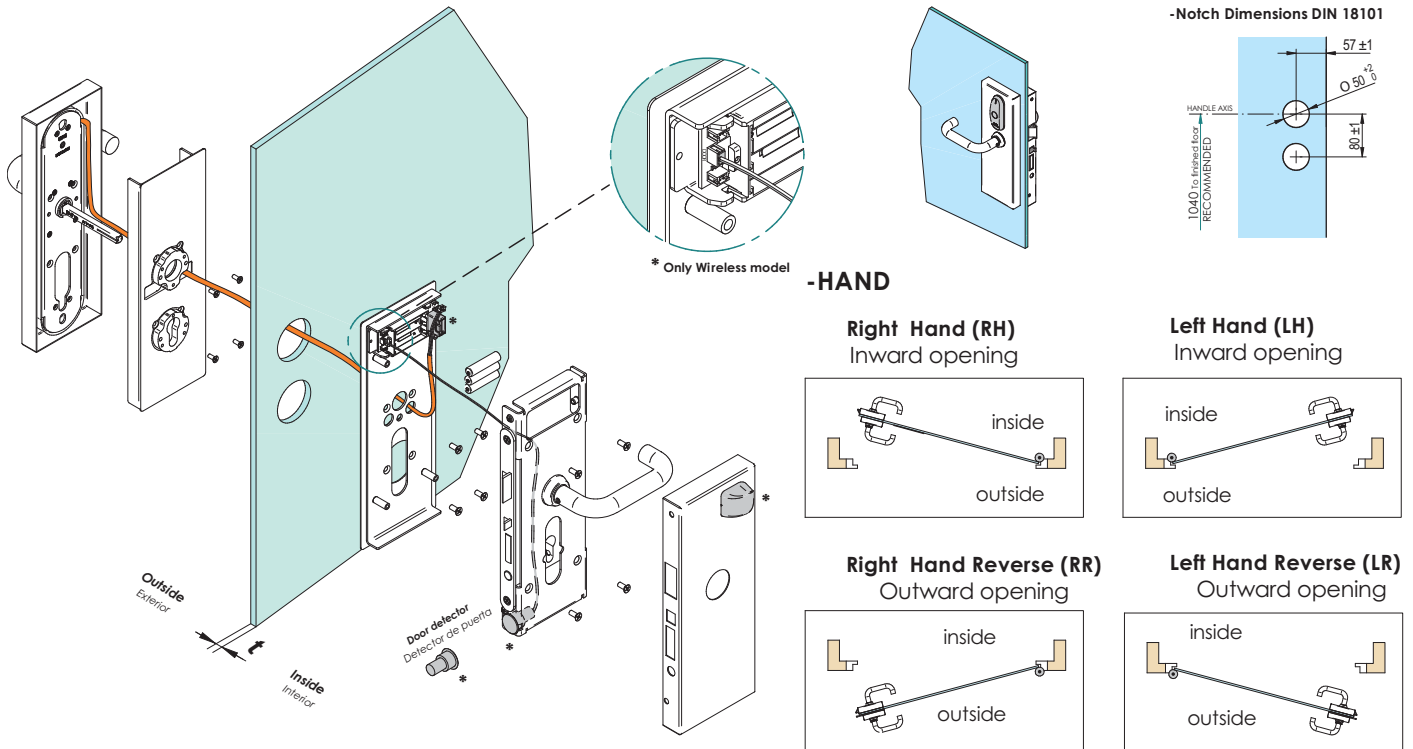


* Only available in satin stainless steel

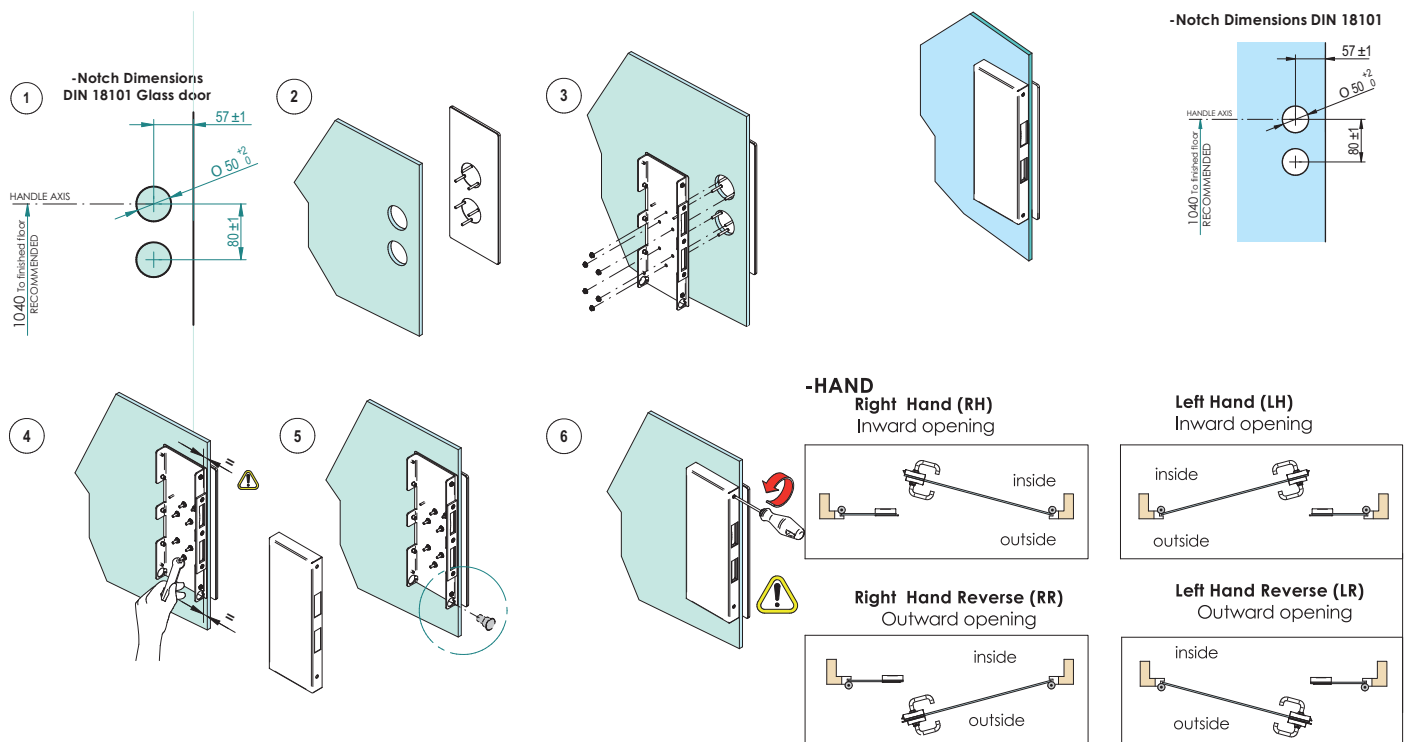
E96xGD

Networked Electronic lock For Glass Door Din 18101 Contactless MIFARE

Glass door electronic escutcheon Installation guide



Counter strike plate for glass door lock Installation guide*



* Strike plates for glass frames and double doors.



E96xGD

Networked Electronic lock For Glass Door Din 18101 Contactless MIFARE

Wireless (available for real-time access control)

SALTO wireless system is an on-line real-time battery powered access control system that uses RF technology.

The SALTO glass door wireless escutcheon is intelligent and takes the decision to grant or deny access based on the users rights. The answer is immediate with no communication needed with the server or controllers, avoiding possible network problems and no emergency master key needed.

Features:

- Wireless Radio Frequency based on IEEE802.15.4 at 2,4Ghz.
- AES 128bits encryption.
- Self-organizing capabilities and Self-healing capabilities.
- Firmware update via PPD.
- Completely integrated with the SALTO platform. Works off-line with SALTO Virtual Network technology if network communication with the computer fails.
- 1000 event audit trail back up if contact with the PC is lost.

Use

Just by presenting the card to the reader, the outside handle will grant or deny access.

The user is notified of the decision by both audible and visual signals. In R&W systems the electronic escutcheon will also record the event on the user card, record low battery status (if applicable) and update the latest black list of cancelled/deleted cards (SVN) in the escutcheon.

Opening modes

- Standard (locked at all times).
- Office (free passage ability).
- Timed Office (free passage with automatic locking).
- Automatic opening (8 pairs of "hands free" timed lock and unlocks per day with holidays).
- Automatic Opening + Office.
- Toggle (present card to lock, present card to unlock).
- Timed toggle (automatic locking at end time).

Certificates

FCC compliant

EN Certification:

EN 300330-1 V1.3.2 (2002-12)
EN 301 489-1 (2002)
EN 301 489-3 (2002)
EN 60950
EN 55022 (1994), class B
EN 55024 (1998)
EN 61000-6-1 (2001)
EN 61000-6-2 (2001)

EN 61000-4-2 (1995),
EN 61000-4-3 (1995)

Operating temperatures

External and inner escutcheon: 0°C / 70°C



Salto Systems HQ

C/Arkotz N°9 Pol. Lanbarren 20180 - Oiartzun Gipuzkoa Spain
Tel.: (34)943 344 550 - Fax: (34) 943 341 621 -
info@saltosystems.com - www.saltosystems.com

Salto International

Salto Systems Inc, Atlanta - Salto Systems Ltd, Birmingham
Salto Asia-Pacific, Kuala Lumpur - Salto Australia, Melbourne, Sydney
Salto Canada, Montreal - Salto Mexico, Cancún - Salto Middle East, Dubai
Salto Netherlands, Amsterdam - Salto Portugal, Oporto