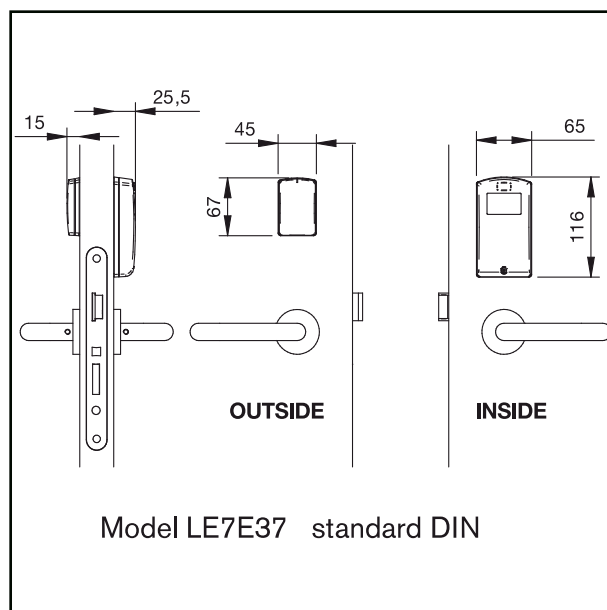


Networked Electronick Lock with Wireless DNA - [WiDNA] Contactless MIFARE

SALTO
inspiredaccess



AELEMENT's versatile design enables hotels to choose their own unique style. The minimalistic design of the RFID reader looks stylish and discreet on any door. It also offers the choice of a wide range of both modern and classic lever designs and finishes, making a bold statement that complements your property's decor.

With the introduction of AELEMENT the day of the off-line hotel lock is over. Now, you can control your property's security, grant access privileges and gather data from every door without leaving your desk using the SALTO wireless technology.

Furthermore, the Mifare RFID contactless technology reads & writes information to contactless smart cards (RFID) compatible with ISO 14.443A, ISO 14.443B and ISO 15.693 (VICINITY) standards, and as MIFARE, DESfire or VICINITY technologies. They also allow for updating of the carriers via SALTO Virtual Net (SVN) technology.

These SALTO AELEMENT electronic locks are compatible with NFC (Near Field Communication) technology which allows NFC enabled cell phones to act as contactless data carriers to open and control SALTO access controlled doors.

They offer a wide range of options when used in multiple applications with other systems using the same card. With simple, intuitive use and ID carriers available in many formats, this system is ideally suited for special needs applications.

Use

Just by presenting the card to the reader, the outside handle will grant or deny access.

The user is notified of the decision by both audible and visual signals. In R&W systems the electronic escutcheon will also record the event on the user card, record low battery status (if applicable) and update the latest black list of cancelled/ deleted cards (SVN) in the escutcheon.

Opening mode

- Standard (locked at all times).
- Automatic changes (8 pairs of "hands free" timed lock and unlocks per day with holidays).
- Toggle (present card to lock, present card to unlock).
- Timed toggle (automatic locking at end time).

Networked Electronick Lock with Wireless DNA - [WiDNA] Contactless MIFARE

SALTO
inspired access

Mechanical features

Mechanical features

- Dimensions: 67mm x 45mm x 15mm.
- Dimensions (interior): 116mm x 65mm x 15mm.
- Handle rotation: 33°
- Handle mechanism block.
- Inside always allows free egress (anti panic in combination with lock).

Mortise lock compatibility:

European Locks

Squared spindles compatibility:

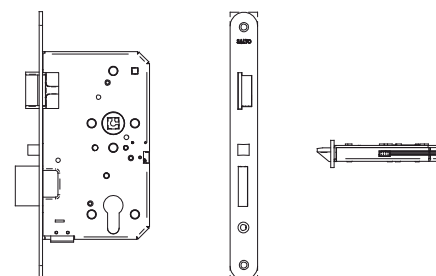
8mm splited*
9mm splited*

* SALTO spindles required

Mortise Lock features- DIN 18250

- Axe distance 72 mm.
- Lock latched deadbolt made of steel.
- Automatic deadbolt projection lock.
- Front plate 20, 24 mm.
- Front plate shape: square or round.
- Backset 55 mm - 65 mm.
- Handed lock - **L/R - not reversible.**

Model LE7E37
Standard DIN18250



Electronic features

- Wire free stand alone networked system through SVN technology*.
- Locks are connected to the system through the SALTO Virtual Network improving the security and efficiency of the system.
- Non volatile memory (it is not deleted, even without power).
- Electronic privacy option through a push button on the inside. This blocks all the carriers from operating the lock, except management master keys, which will always override this privacy mode to gain entry in cases of emergency.
- Escutcheons are equipped with a low consumption real time clock function.
- Dual colour LED (green/red) to indicate lock authorisation.
- Special blink indication when lock is in privacy mode.
- Possibility to enable/disable the acoustic signal.
- Power supply: 3 alkaline batteries LR03 AAA 1,5V. optional lithium batteries FR03.
- Battery autonomy up to 50 000 openings.



ID technology



- 13.56MHz contactless RFID identification.
- ISO 14.443A, ISO 14.443B and ISO 15.693 (Vicinity), Mifare, DESfire compatible.
- Near Field Communication (NFC) compatible.
- Key card available: 112bytes (i-code), 1Kbyte (Mifare) and 4Kbytes (Mifare).
- Key shape available: ISO 7810 Cards, fobs, bracelets, stickers, watches...
- Reusable key cards.
- SALTO Virtual Network (SVN) compatible*.
- RFID technology, there's a contactless exchange of information between the card and the reader*.
- High security, by using password and encrypted Proximity cards.
- Multiapplication with other systems using the same card through shared sectors.
- Customized card issuing through the SALTO Authorization Media software (SAM).
- Waterproof cards which can be customized.

Networked Electronick Lock with Wireless DNA - [WiDNA] Contactless MIFARE

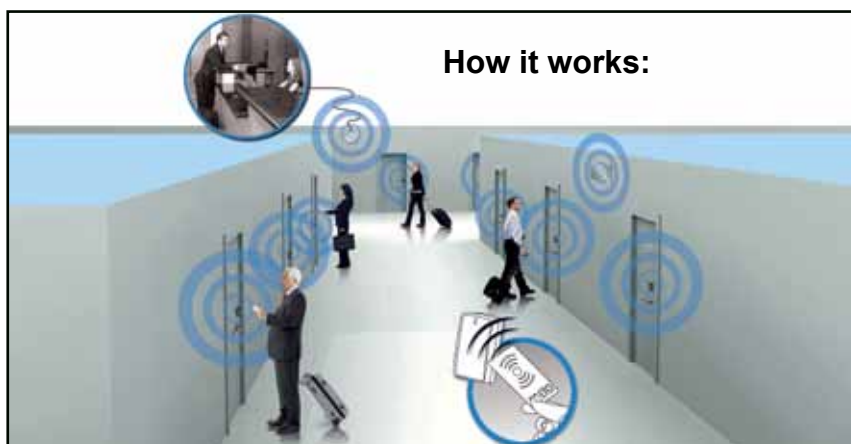
Wireless features

- Wireless ready devices, Standard standalone AElement locks can be upgrade to wireless just by putting the wireless antenna.
- No retrofit needed.
- Wireless Radio Frequency based on IEEE 802.15.4 at 2,4Ghz.
- AES 128bits encryption.
- System managed through HAMS SQL software.
- Self-organizing capabilities, the escutcheons automatically organize their structure in order to build up the RF connections.
- Self-healing capabilities, the escutcheons automatically scan for a new connection in any repeater or gateway loses RF connection.
- SALTO Virtual Network technology included. The escutcheons will continue working, granting access control via SVN technology if the data network crashes or the PC is disconnected.
- Wireless infrastructure set up through gateways and repeaters.
- One gateway can support multiple locks, gateways and repeaters.
- Gateway connection to the server or PC RJ45 Ethernet.
- Gateway connection to the locks, repeaters and other gateways encrypted radiofrequency IEEE 802.15.4 at 2,4Ghz.
- Gateway voltage required 12V (adapter included – POE available soon).
- Repeater connection to the locks, gateway or other repeaters encrypted radiofrequency IEEE 802.15.4 at 2,4Ghz.
- Repeater voltage required 12V (adapter included).
- Repeater connection to the locks, gateway and other repeaters encrypted radiofrequency IEEE 802.15.4 at 2,4Ghz.

Wireless functions

- Instant room move (re-rooming).
- Instant extended stay.
- Live on-line staff tracking.
- Real-time monitoring.
- Instant master card cancellation.
- Remote real-time guest check out.
- Dynamic master keys.
- Privacy guest room mode monitoring to know if the guest is in the room.
- Real-time audit trail.
- Automated "low battery report" for maintenance.
- Remote maintenance system to report in room problems.
- Real-time audit of inside openings
- Passage mode activates for meeting rooms
- Lost card cancellation
- Door ajar alarm
- Intrusion alarm
- Remote opening
- Lock down emergency function.

** Depending on the model or the RFID technology.*



The gateway:

The gateway acts as a link between the PC or server, where the database is located, (standard RJ45 Ethernet connection) and the wireless battery powered locks.

The repeaters:

Repeaters act as a bridge between a gateway and the locks or even another repeater.

The AElement wireless locks:

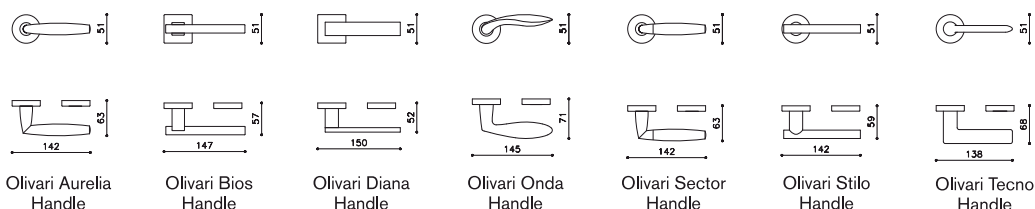
Huge range of locks styles and sizes including European and ANSI models. SALTO mortise locks are easy to install and configure.

Networked Electronick Lock with Wireless DNA - [WiDNA] Contactless MIFARE

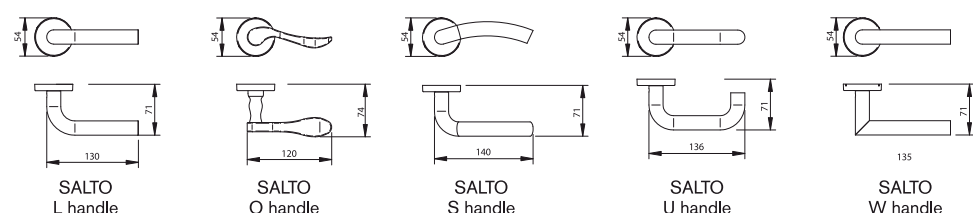
SALTO
inspiredaccess

Handle

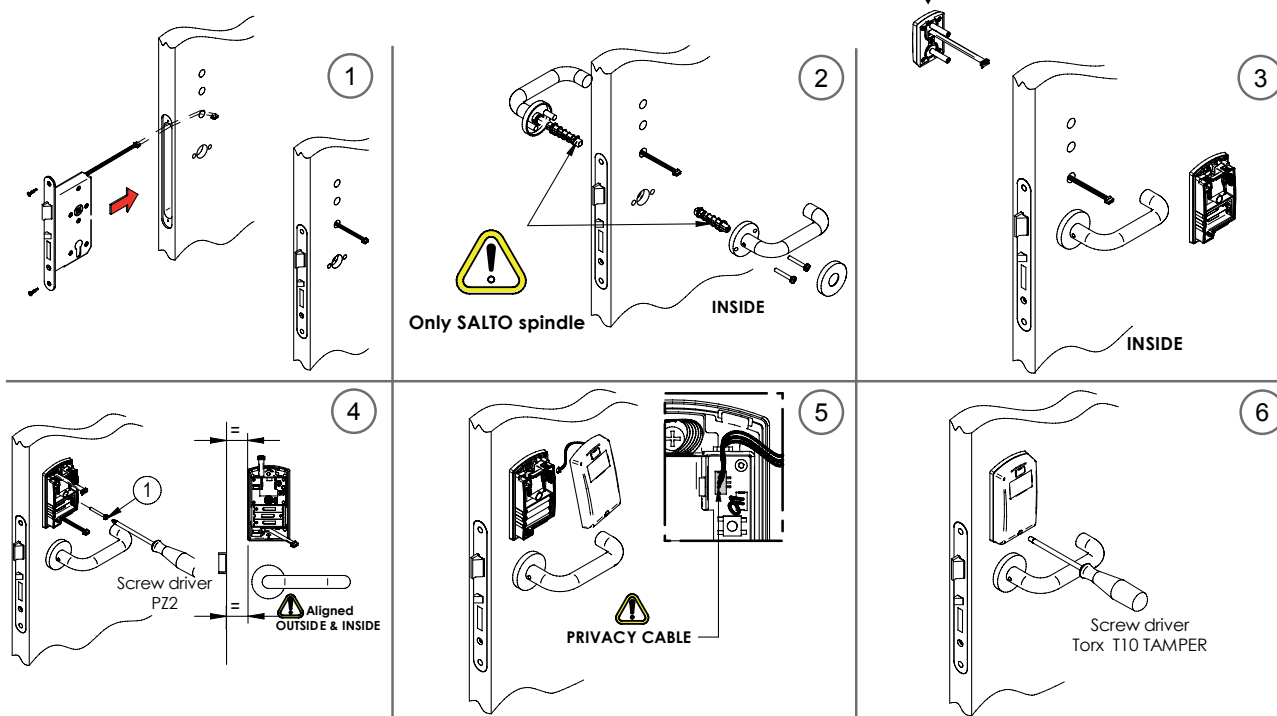
OLIVARI design handles



SALTO standard handles



Installation guide



SALTO
inspiredaccess

Salto Systems HQ

C/Arkotz N°9 Pol. Lanbarren 20180 - Oiartzun Gipuzkoa Spain
Tel.: (34)943 344 550 - Fax: (34) 943 341 621 -
info@saltosystems.com - www.saltosystems.com

Salto International

Salto Systems Inc, Atlanta - Salto Systems Ltd, Birmingham
Salto Asia-Pacific, Kuala Lumpur - Salto Australia, Melbourne, Sydney
Salto Canada, Montreal - Salto Mexico, Cancún - Salto Middle East, Dubai
Salto Netherlands, Amsterdam - Salto Portugal, Oporto